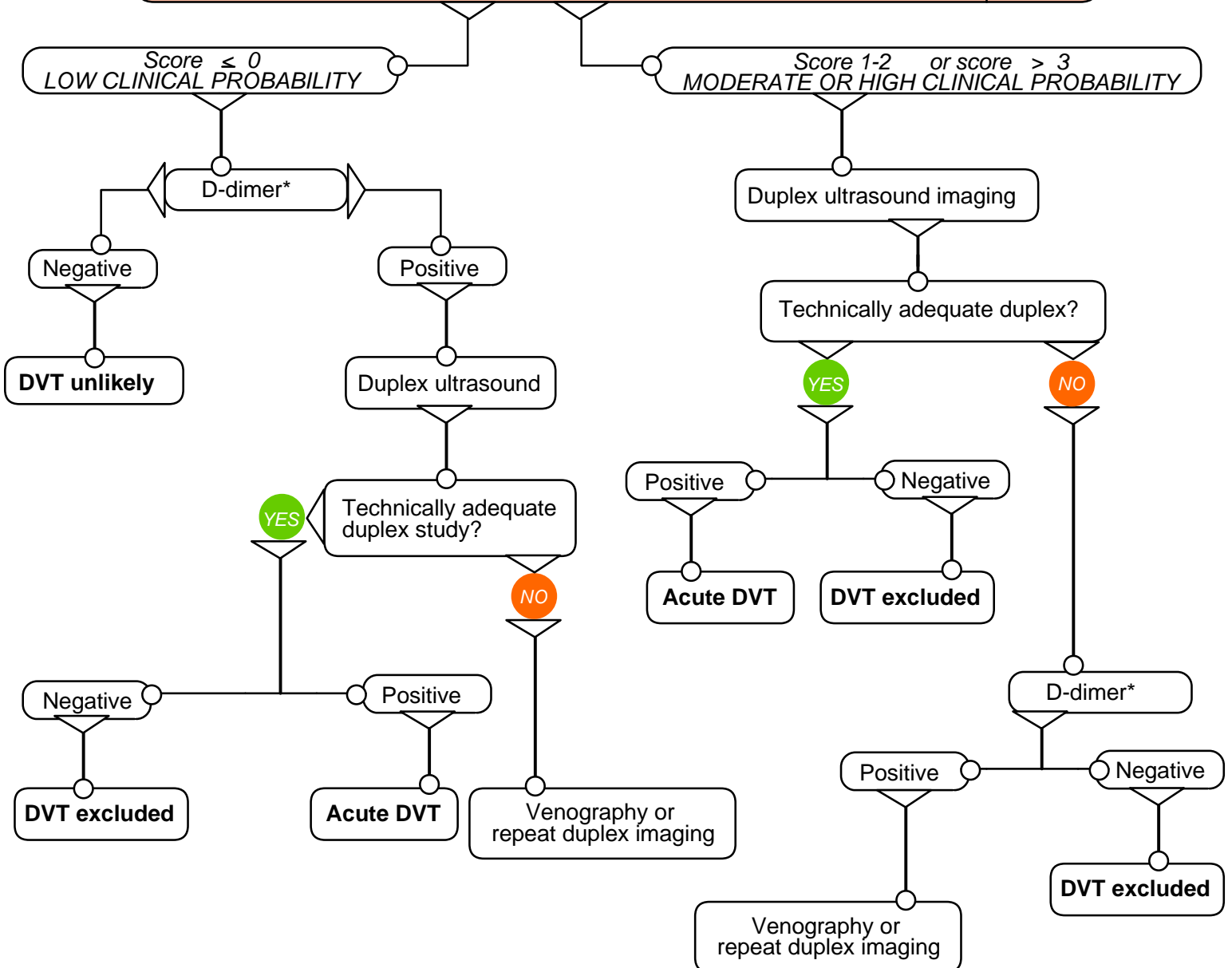


DIAGNOSTIC WORKUP OF PATIENTS PRESENTING WITH SIGNS AND SYMPTOMS OF DVT

- 1) History and physical exam
- 2) DVT Risk factor assessment
- 3) Clinical Probability Rating

SCORE

Active cancer (treatment ongoing or within 6 months or palliative)	1
Paralysis, paresis or recent plaster immobilization of the lower extremities	1
Recently bedridden >3 days or major surgery within four weeks	1
Localized tenderness along the distribution of the deep venous system	1
Entire leg swollen	1
Calf swelling 3cm > asymptomatic side (measured 10 cm below tibial tuberosity)	1
Pitting edema confined to the symptomatic leg	1
Collateral superficial veins (non-varicose)	1
Alternative diagnosis as likely or greater than that of DVT	-2



* d-dimer in outpatients only